



**BROCHURE**

Sitecore Content Hub™  
Advantage by EPAM

# Sitecore Content Hub™ Advantage by EPAM

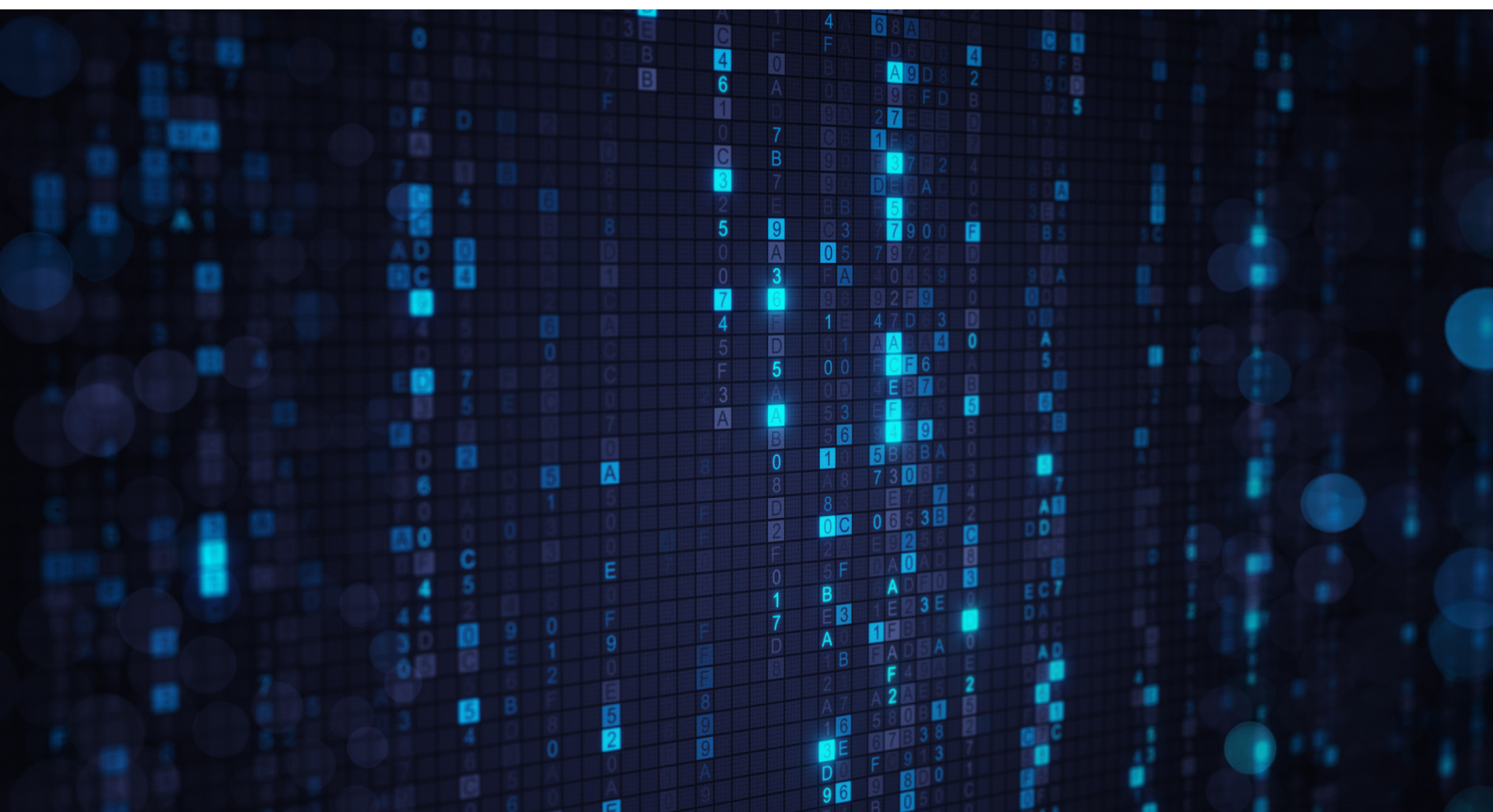
---

As consumer expectations continue to rise, it's increasingly important for organizations to produce the high-quality content needed to win and retain business while generating the quantity of content required to build personalized omnichannel experiences.

To solve this challenge, Sitecore has revolutionized the way brands deliver innovative customer experiences at scale with **Sitecore Content Hub™**. This single, integrated solution unifies content planning, production, collaboration and management.

As a Platinum Sitecore Partner with Content Hub specializations in North America and EMEA, we've developed the Sitecore Content Hub™ Advantage by EPAM. This turnkey offering enables our customers to deploy Sitecore Content Hub in just ten weeks and allows brands to:

- Configure Sitecore Digital Asset Management (DAM) and prepare asset import and migration scripts
- Configure Content Hub Content Marketing Platform (CMP) to manage campaigns across multiple channels and media types
- Develop an extensible platform that can be further integrated or customized in the future
- Set up Sitecore DAM and Sitecore CMP connectors to integrate with Sitecore Experience Platform™ (XP) (For customers with Sitecore XP 9.0+)



# Sitecore Content Hub™ Advantage by EPAM

## BUILT-IN FEATURES

### Brand Marketing

- Customized theme for your brand
- Migration templates and scripts for digital assets
- Sitecore Digital Asset Management (DAM) and Sitecore Content Marketing Platform (CMP) modules

### Configurations & Workflows

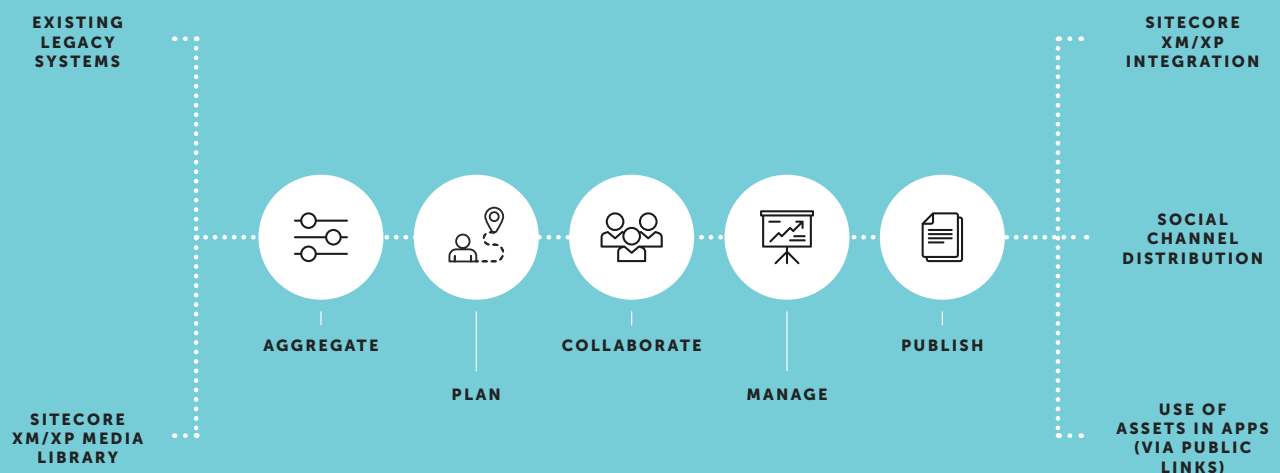
- Domain model configuration for Sitecore DAM and Sitecore CMP with up to 50 content types
- Up to ten detail page configurations
- Up to five media rendition configurations
- Up to ten security roles and three workflows

### Integrations

- Sitecore CMP integration with popular social media channels, such as Facebook, Twitter, LinkedIn, Instagram, etc.
- Integration with Sitecore XP 9.0+ (Optional)

### Training & Education

- Sitecore Content Hub end-user training for DAM and CMP modules
- Sitecore XP training for DAM and CMP integration (Optional)



# Sitecore Content Hub™ Advantage by EPAM

---

## ADDITIONAL EXTENSIONS

The following extensions are typically required for a Sitecore Content Hub Enterprise edition implementation and are subject to evaluation, timeline and price adjustment after a consultation:

- Custom user experience/visual design
- Migration from existing DAM systems
- Integration with custom identity provider(s) for SSO
- Ongoing post-launch support
- Integration with custom social channels
- Multilingual and translation support
- Integrations with enterprise or third-party taxonomy systems or other data sources

## TECHNOLOGY OVERVIEW

### Software:

- Sitecore Content Hub Corporate or Enterprise edition

### For integration with Sitecore Experience Manager (XM) or Sitecore XP:

- Existing XP/XP 8.2 instance for DAM connector installation
- Existing XP 9.1+ instance for CMP connector installation

### EPAM Accelerators:

- EPAM Social Connect Library for Sitecore Content Hub
  - Includes connectors for Facebook, Twitter, LinkedIn, Instagram and others
- EPAM Migration Accelerator for Sitecore Content Hub
  - Provides a toolkit for migrating assets and content from legacy DAM and web content management systems

## START THE CONVERSATION TODAY

Learn how EPAM can help streamline your content lifecycle—from planning and curation to multichannel delivery and asset governance.

Contact us today to start the conversation!

[Wfbsitecore@epam.com](mailto:Wfbsitecore@epam.com) | [www.epam.com/sitecore-content-hub](http://www.epam.com/sitecore-content-hub)

